

### Expand Your Resources -- Protect Your Image:

Whether a site is newly acquired or existing, it is typical that the personality of a building changes over time. Accurate information regarding exterior site plans, existing interior dimensions ("as-built plans"), merchandising fixtures and equipment placement, facility and fixture maintenance, and seasonal change out / rotation of marketing messages is essential to any efficient successful renovation project.

Effective construction management with a web-based project management system to inventory and track all elements is also important to an economical, on-time completion of the project.

The challenge: Do you expand your staff to meet temporary, fluctuating needs, or do you draw on outside resources?

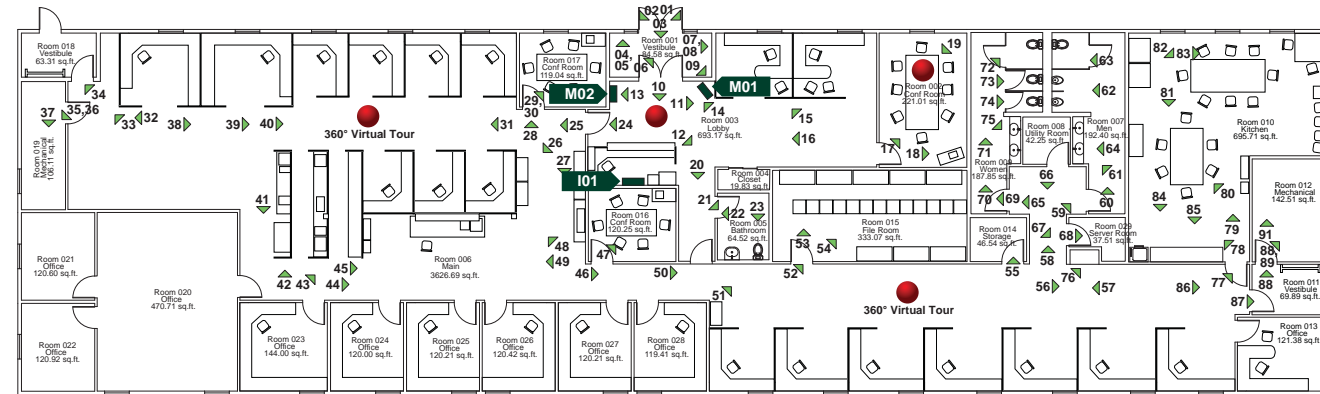
Image Resource Group's team of surveyors, commercial artists, and project and construction managers can supplement existing personnel! By obtaining an accurate record of the fixtures, signs, and marketing elements, clients can insure that image is properly presented. In-house personnel or consultants can view each facility on the web and develop plans to correct or enhance the presentation of the client brand.

Essential to the presentation of an image is the condition of the environment within the facility. Old carpet, worn furniture and dated wall finishes can detract from achievement of the overall desired effect. The documents generated from the survey process are easily turned into construction documents to facilitate the restoration and renovation processes necessary to effectively present an image. Budgets can be developed to facilitate a phased-in deployment over years as funds are available or a rapid overnight deployment to change that worn and dated image.

### Interior Survey Services:

Image Resource Group's team of surveyors and project and construction managers can make it happen. Our lightweight, hand-held measuring system is revolutionizing the as-built and site surveying process. This cutting-edge laser technology measures and draws spaces in real time, and does not disrupt day-to-day activity. Our system will collect, catalog, and issue a schedule of all types of assets. Surveys of limited scope or cradle-to-grave services include:

- Interior "as-built" floor plans utilizing cutting-edge laser technology for quick, accurate room square footage and cubic footage
- Merchandising and marketing fixtures, furniture, and equipment placement and tracking
- *Interior and exterior site photos, including a 360° web-based virtual tour of any area requested*
- General conditions and the useful life of elements can be estimated to forecast funding needs to maintain the appearance of the facility
- Wall finishes
- Flooring finishes



Interior Floor Plan

Recommended Signage & Fabrication Drawings									
Sign #	Recommended Part	Permit	Allocated	Shipped	Installation Complete	Punch List	Mfg. P.O.#	Installer	Drawings
E01	NCO_IL_CL-18	10/07/09	10/07/09	10/09/09	11/09/09	11/15/09	TST-12092	TEST Vendor	Fab PDF Fab EPS
E02	NCO_IL_CL-30	10/07/09	10/07/09	10/09/09	11/09/09	11/15/09	TST-12092	TEST Vendor	Fab PDF Fab EPS
E06	NCO_NL_PL-15	N/A	10/07/09	10/09/09	11/09/09	11/15/09	TST-12092	TEST Vendor	Fab PDF Fab EPS
E07	NCO_IL_CL-30	10/07/09	10/07/09	10/09/09	11/09/09	11/15/09	TST-12092	TEST Vendor	Fab PDF Fab EPS

Survey Data								
Sign #	Sign Type	Illumination	Transformer	Fascia	O.A. Height	O.A. Width	O.A. Depth	Actions
E01	Channel Letters	Face-Illuminated	Remote 120V	Vinyl Siding	1'-8"	8'-11 1/2"	4"	View Details
E02	Channel Letters	Face-Illuminated	Remote 120V	Vinyl Siding	3'-0"	16'-1 1/2"	4"	View Details
E03	Vinyl Copy	Non-Illuminated	N/A	Glass	5"	1'-10 5/8"		View Details

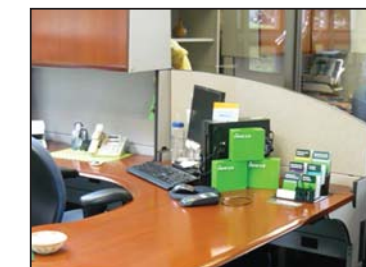


Photo 15



Photo 25



360° Virtual Tour  
(Quicktime Movie)



Sign: I01 (Photo 10)

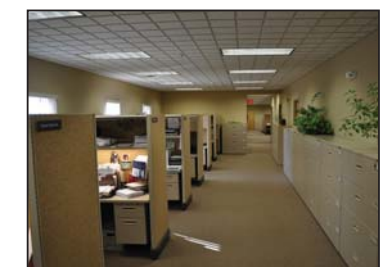


Photo 57